

SRS-XE200

SERVICE MANUAL

DISCLAIMER: USE AT OWN RISK.

SONY AND ITS AFFILIATES ARE NOT LIABLE FOR ANY DAMAGE OR INJURY CAUSED TO ANY DIGITAL ELECTRONIC EQUIPMENT, PERSON, OR PROPERTY, WHICH OCCURS DUE TO USE OF THE TOOLS, PARTS, DOCUMENTATION, OR OTHER MATERIALS HEREIN PROVIDED, WHETHER FOR REPAIR, DIAGNOSIS, MAINTENANCE, MODIFICATION, OR OTHERWISE, INCLUDING BUT NOT LIMITED TO: ANY INDIRECT, INCIDENTAL, SPECIAL, OR CONSEQUENTIAL DAMAGES; ANY LOSS OF DATA, PRIVACY OR PROFITS; OR ANY INABILITY TO USE, OR REDUCED FUNCTIONALITY OF, THE DIGITAL ELECTRONIC EQUIPMENT. PLEASE READ ALL INSTRUCTIONS IN THIS MANUAL BEFORE PROCEEDING. PLEASE FOLLOW ALL STEPS IN THE ORDER IN WHICH THEY ARE DESCRIBED. IF YOU DO NOT HAVE ALL TOOLS AND PARTS AVAILABLE TO YOU, OR ARE NOT COMFORTABLE PERFORMING THE REPAIRS DESCRIBED HEREIN, DO NOT PROCEED. FAILURE TO FOLLOW THESE INSTRUCTIONS, OR USE THE PROPER TOOLS AND PARTS, MAY DAMAGE YOUR PRODUCT, LEAD TO PERSONAL INJURY OR CAUSE PROPERTY DAMAGE.

CAUTION

Danger of explosion if battery is incorrectly replaced.
Replace only with the same or equivalent type.

SRS-XE200

SERVICE MANUAL

US Model

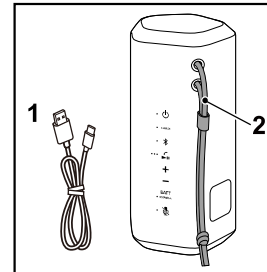
- **Color variations**

(B) Black, (D) Orange, (H) Light Gray, (L) Blue

- The service policy of this model is Product Exchange.
The following parts are available for service parts of this model.

PARTS LIST

Ref. No.	Part No.	Description	Remark	Ref. No.	Part No.	Description	Remark
	503789311	OPERATING INSTRUCTIONS		1	930100334	CORD, CONNECTION (50) (USB Type-C® cable (USB-A to USB-C / Max. 1.5 A))	
	503789511	REFERENCE GUIDE (ENGLISH, SPANISH, FRENCH)		2	930101513	STRAP, B (Strap for Black)	
				2	930101514	STRAP, H (Strap for Light Gray)	
				2	930101515	STRAP, L (Strap for Blue)	
				2	930101516	STRAP, D (Strap for Orange)	

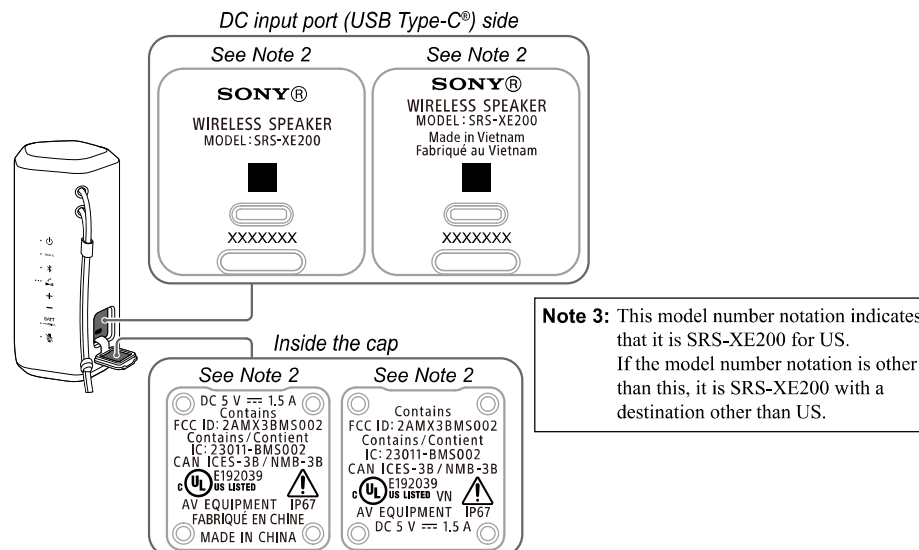


MODEL IDENTIFICATION

When identifying the destination, refer to the model number notation of inside the cap and DC input port (USB Type-C®) side.

Note 1: The contents of model number notation might be changed in the midway of production.

Note 2: There are two types of model number notation depending on the country of origin.



WIRELESS SPEAKER